

---

# Solar LED Pillar Light Specification



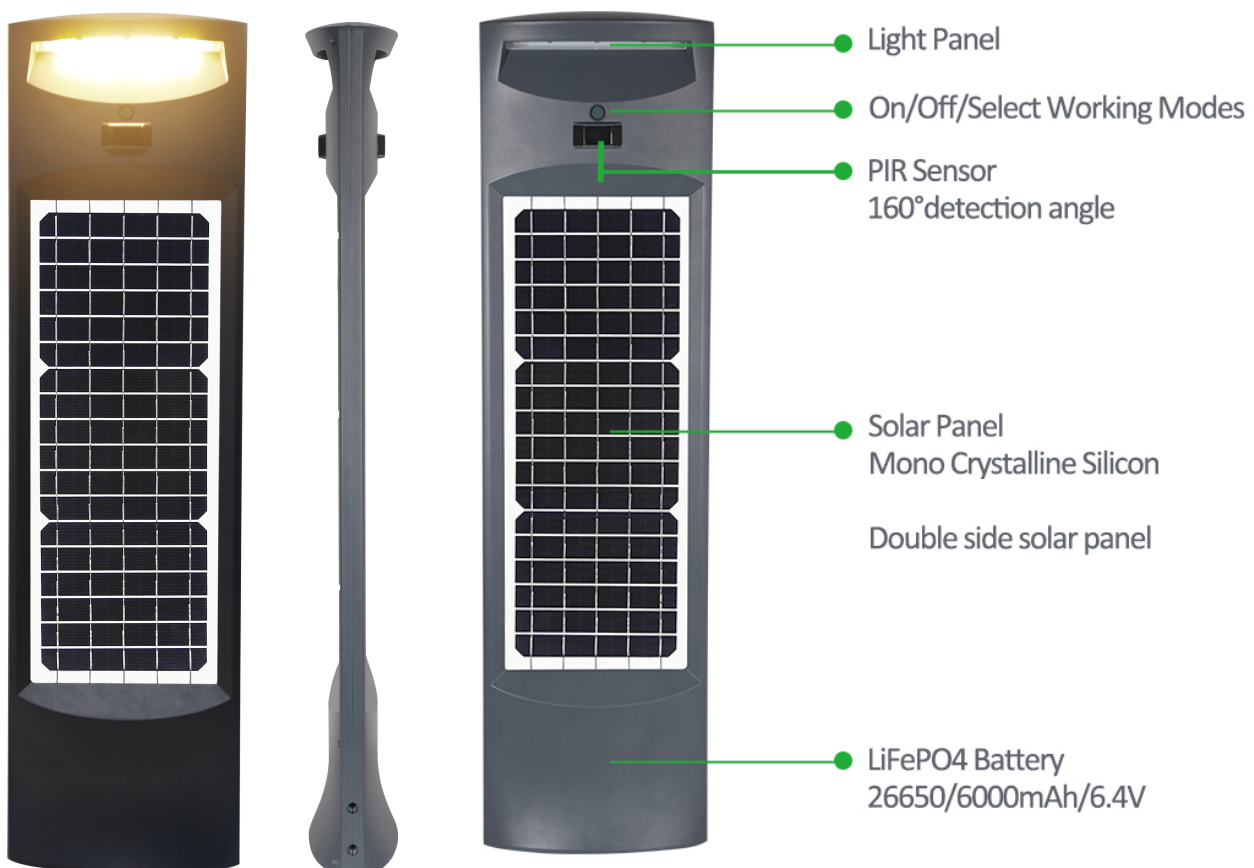
Product Name	Solar LED Pillar light
Specification	Solar LED Pillar light 20W
Date	2022-02-16
Version	REV 1.0



## Features & Advantages

- Global patented design, streamlined and aesthetically pleasing
- Double-sided illumination or single-sided illumination select-able, multifunctional.
- Double-glazed solar panel, mono crystalline silicon material with 18.5% conversion efficiency, 20year lifespan.
- Impressive light intensity 2000LM with wider lighting area.
- Two working modes for different applications.
- Different working modes can be selected individually on each side.
- Easy to install on various surfaces
- IP65 waterproof and dust resistant .
- Smooth optics for improved light transmission
- Built in LiFePO4 battery 26650/6000mA/6.4V.
- Battery is replaceable.
- New type of PIR sensor with wider detective angle 160° with a detection of area 8mtrs.
- Widely used for courtyard, garden, rural road, pathway, lawn, square, public places etc.
- 5 years warranty.

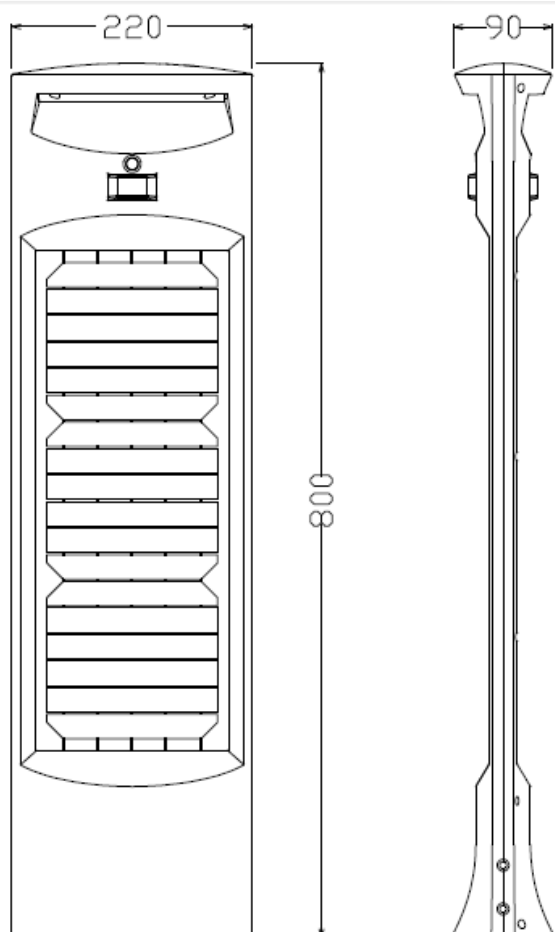
## Product Image



## Specifications

Product Model	LD-SPL-20W-Guardian	Overall Dimension	800*220*90mm
Power	20W	Lumen	2000LM
Solar Panel	Mono-crystalline silicone (11Wp+9Wp)	LiFePO4 Battery	26650/6000mA/6.4V
Charging Time	8Hrs to fully charge	Working Time	Sensor Mode: 4 nights+ Constant Light Mode: 2 nights+
LED Type	SMD3030*40PCS	PIR sensor Range	Detection angle: 160° Detection area: 10Mtrs
Surface Color	Grey/ Black	Beam angle	120°
IP Class	IP65	Working Temp	-20C°- 60C°
Housing Material	Aluminum ADC12	Warranty	5 year (excluding Battery)

## Product Dimension (mm)



## Working Modes:

### Remarks:

- \* There's one button on each side of the lamp, please press the button to select the working mode for each side individually.
- \* The lamp's battery will charge through sun light in either mode.

Press the button once to activate Sensor Mode.

Press the button twice to activate Constant Lighting Mode.

Press the button three times to power the unit off

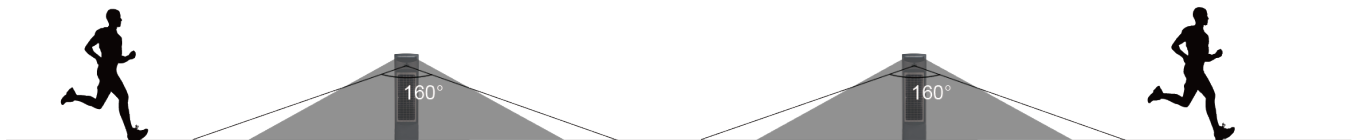
### Sensor Mode

Automatically turns on to full brightness (2000lm) when motion is detected in the range  $\leq 8$  mtrs and then dims to (300lm) after 20 seconds of no motion.



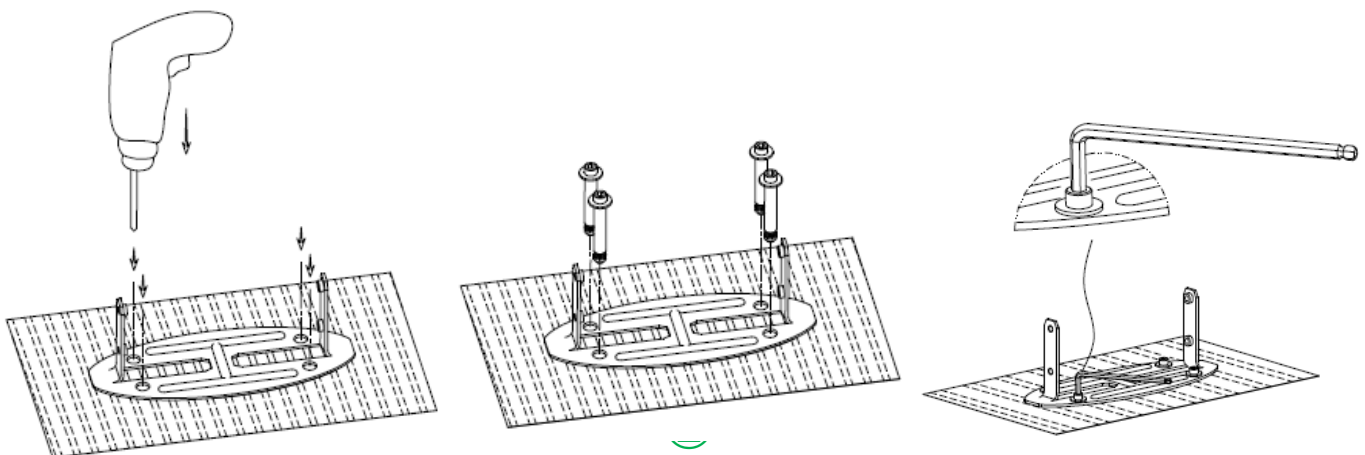
### Constant Lighting Mode

Automatically turns on at dusk and keep 50% brightness(1000lm) until dawn and power's off.

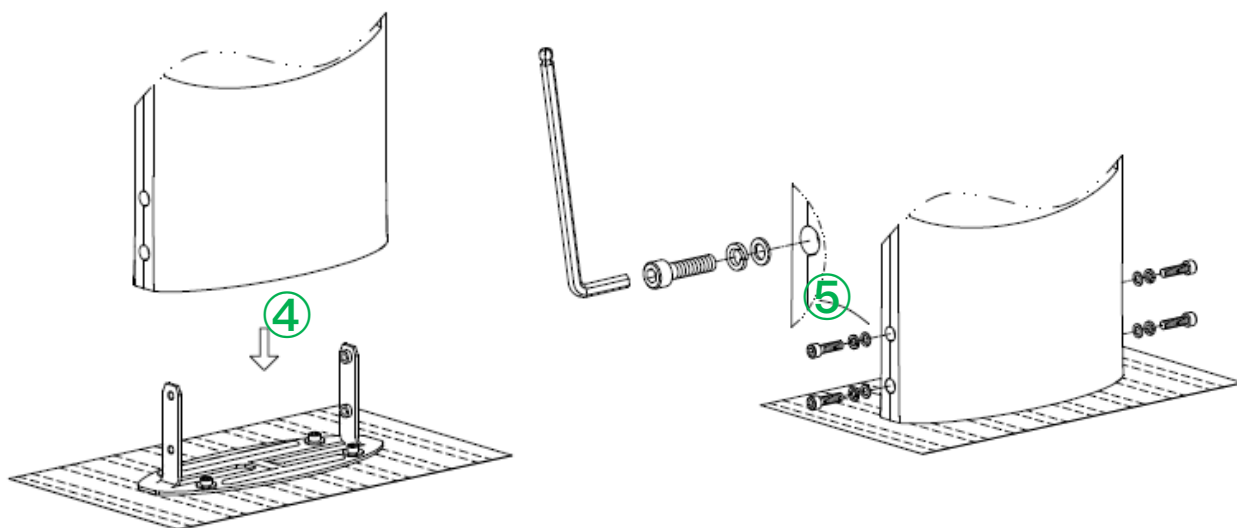


## Installations

### Installation A: Concrete Ground







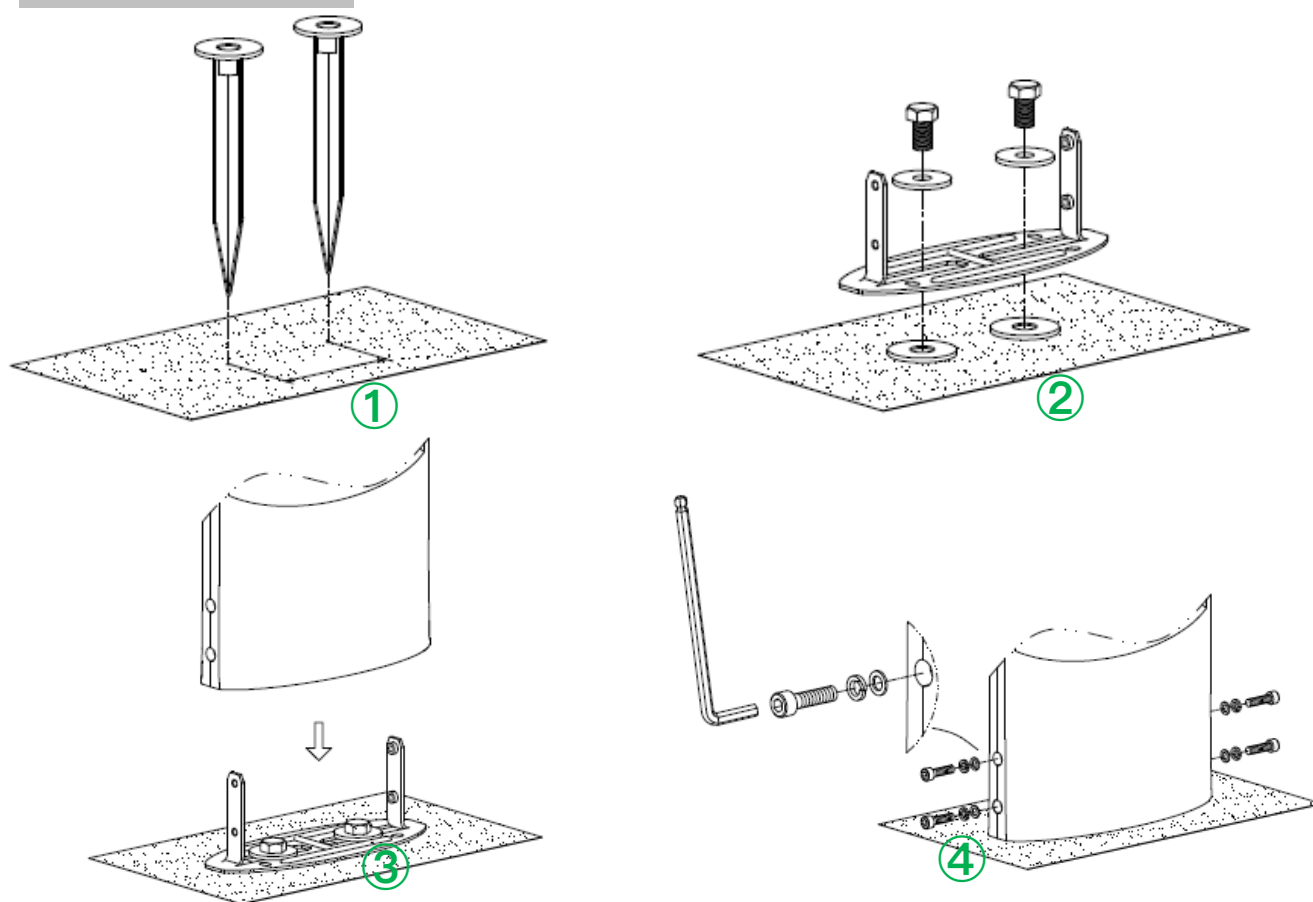
1.Prepare lamp, accessories and tools well firstly.

2.Drill four holes of  $\phi 10\text{mm}$  with a depth of 70mm on the flat concrete ground. (picture ①)

3.Insert the expansion screws into the holes and lock the expansion screws with Allen Wrench. (picture ②-③)

4.Put the lamp onto the metal bracket and align the four holes, then lock the lamp and metal bracket with screws, spring washers and gaskets. (picture ④-⑤)

#### Installation B: Soft Lawn



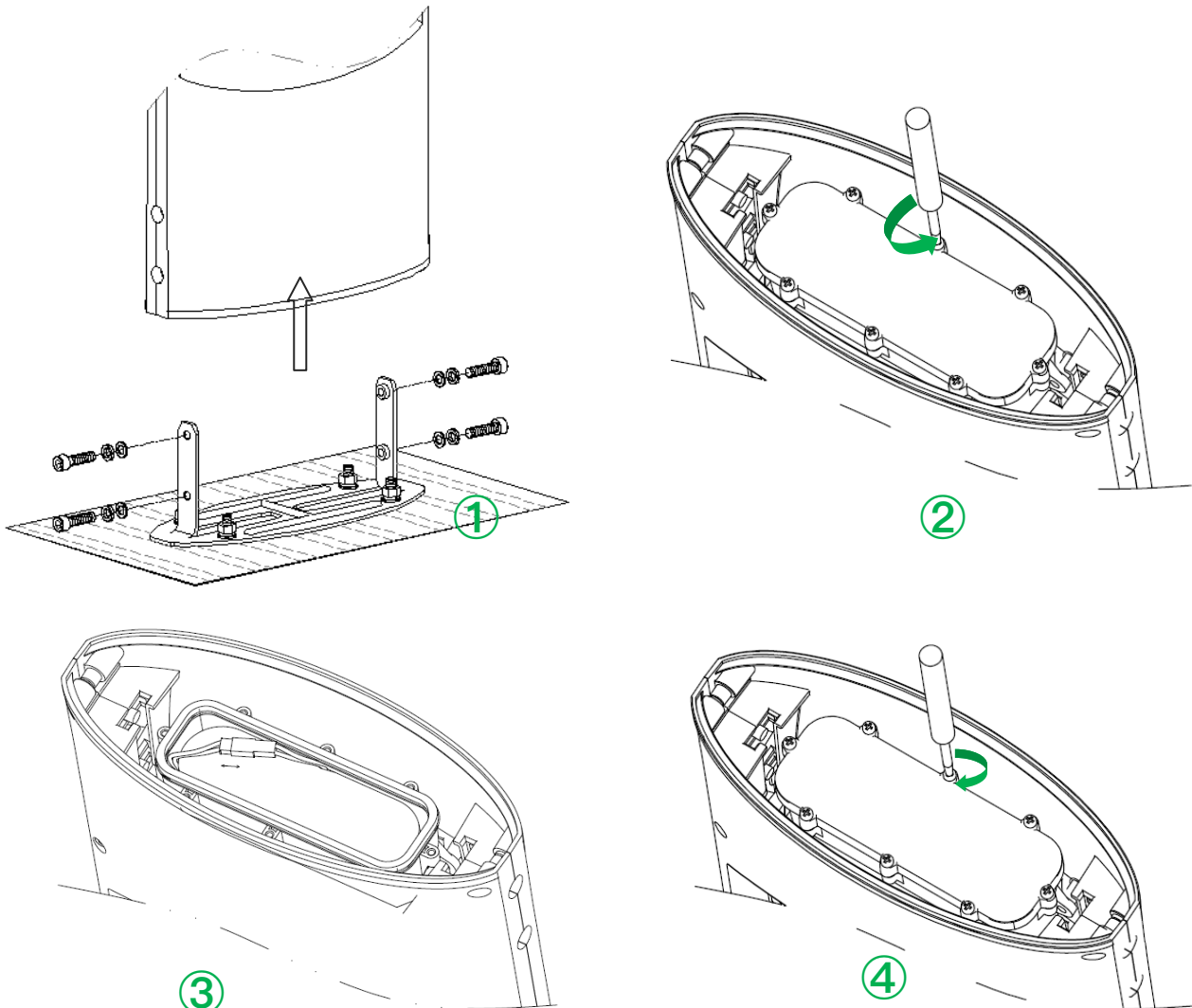
1.Prepare lamp, accessories and tools.

2.Insert two spikes into the lawn with a space 60mm-120mm between. (Picture ①)

3. Use screws and gaskets to fix the metal bracket onto the surface of spikes. (Picture ②)

4. Put the lamp onto the metal bracket and align the four holes, then lock the lamp and metal bracket with screws, spring washers and gaskets. (Picture ③-④)

### How to replace the battery?



1. Loosen the four screws on the side of the lamp and lift up the lamp. (see picture ①).

2. Unscrew the battery cover screw, open the battery cover, and replace the corresponding battery pack. (see picture ② ③)

3. After replacing the battery, lock the battery cover and install the lamp onto the metal bracket. (see picture ④)

Do not dispose batteries in household waste.

---

## Applications

Widely used for public places, driveway, pathway, courtyard, garden, rural roads, lawn etc.



- 
- 1.The lamp is equipped with an internal battery pack, which is replaceable.
  - 2.This is a solar powered lamp, please install it in a location where can get enough sunshine.
  - 3.Please note the lighting time depends on sunshine duration & weather.
  - 4.Built-in intelligent IC is with over-charge, over-discharge and over-voltage protection.
  - 5.The lamp will automatically light up at dusk and off at dawn.
  - 6.Non-professionals please do not disassemble the lamp.
  - 7.Please do not dispose the battery with household garbage to avoid explosion.